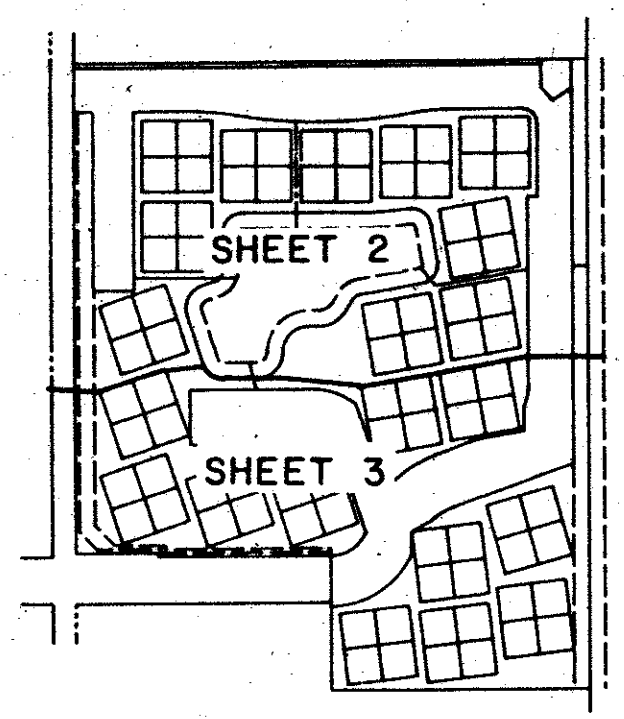


SUNTERRACE AT THE GARDENS

BEING A PORTION OF THE SOUTHEAST QUARTER OF THE SOUTHWEST QUARTER OF SECTION 18, TOWNSHIP 42 SOUTH, RANGE 43 EAST, PALM BEACH COUNTY, FLORIDA

SHEET 2 OF 3

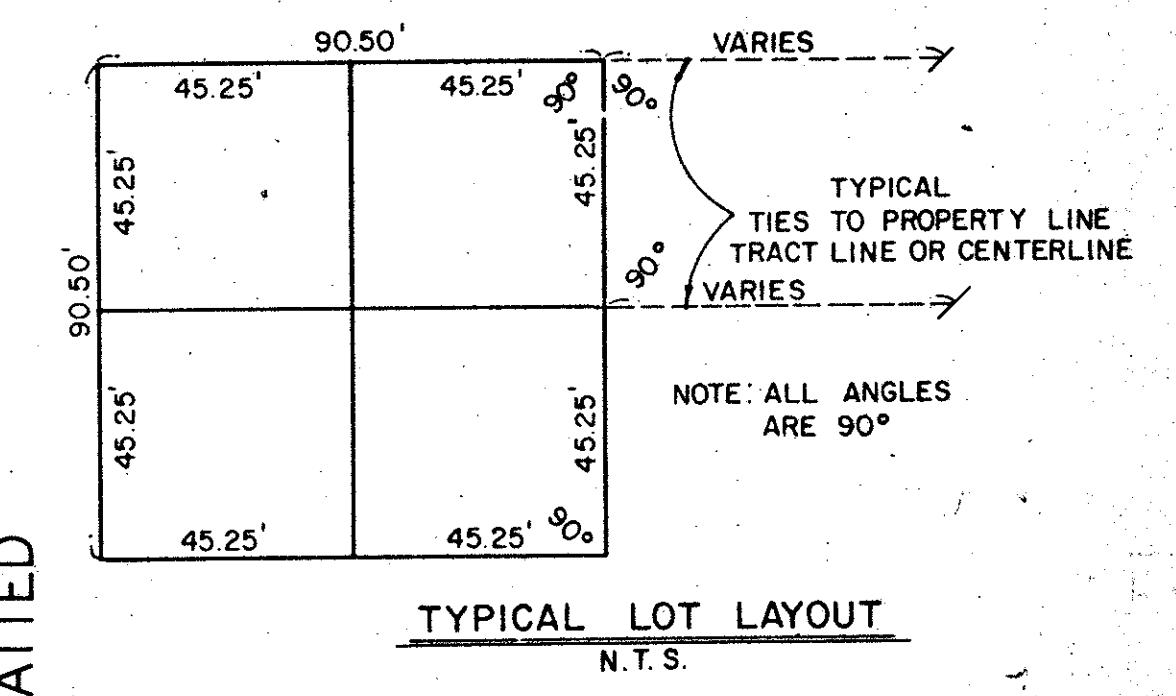
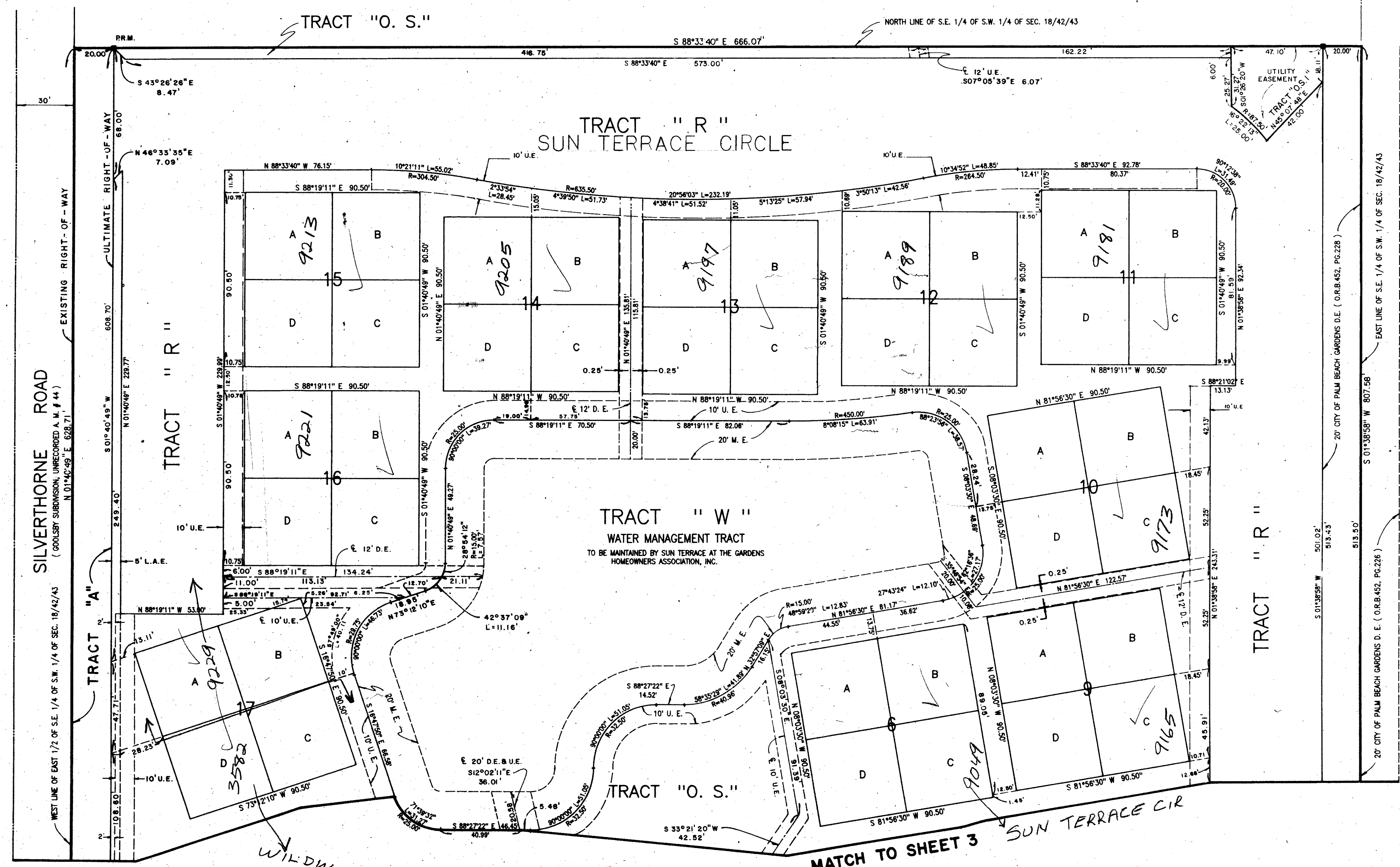
DECEMBER, 1989



NOT PLATTED

STATE OF FLORIDA
COUNTY OF PALM BEACH
This Plat was filed for record at _____
M. this _____ day of _____, 19____
and duly recorded in Plat Book No. _____
on Page _____
John B. Dunkle, Clerk of the Circuit Court
By _____ D.C.

KEY MAP
N.T.S.



NOT PLATTED

ADD. BY b.j.
CHECKED BY [Signature]

GRAPHIC SCALE 1"=30'

SUBDIVISION * SUN TERRACE AT THE GARDENS
BOOK 64
PAGE 175
FLOOD ZONE(12)
QUAD * 13
SE
PUD NAME
TAX 105

64/175 0575-00X

Landmark Surveying & Mapping Inc.
1850 FOREST HILL BOULEVARD
PH. (407)433-5405 SUITE 100 W.P.B. FLORIDA

SUNTERRACE AT THE GARDENS